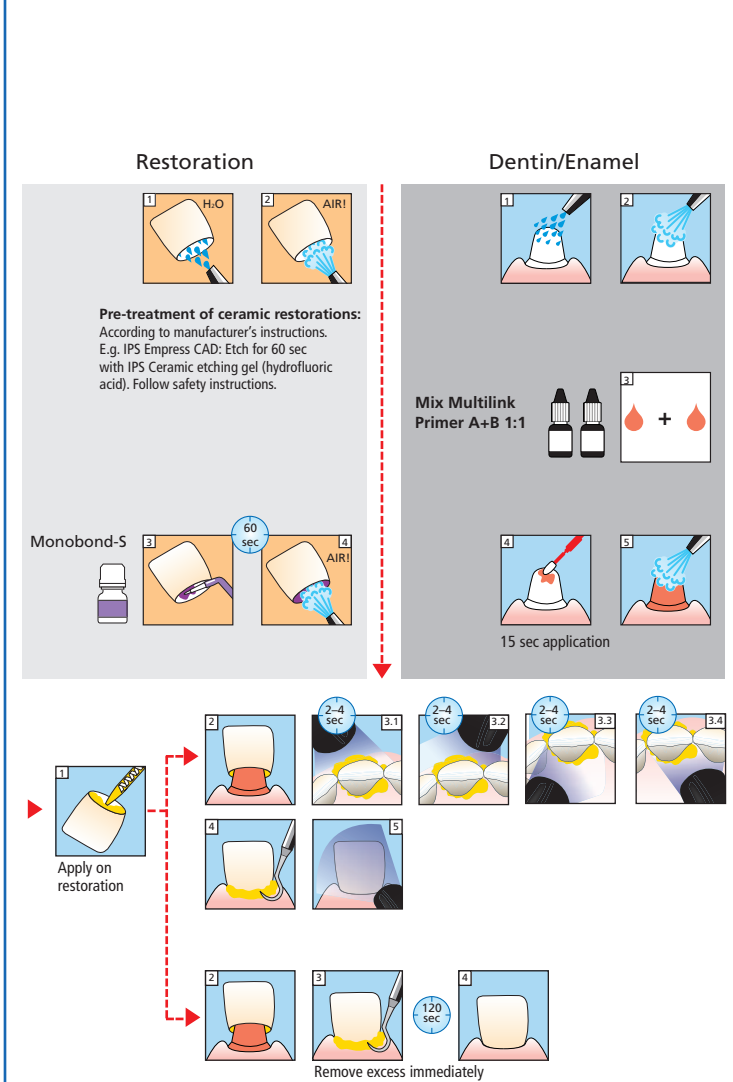
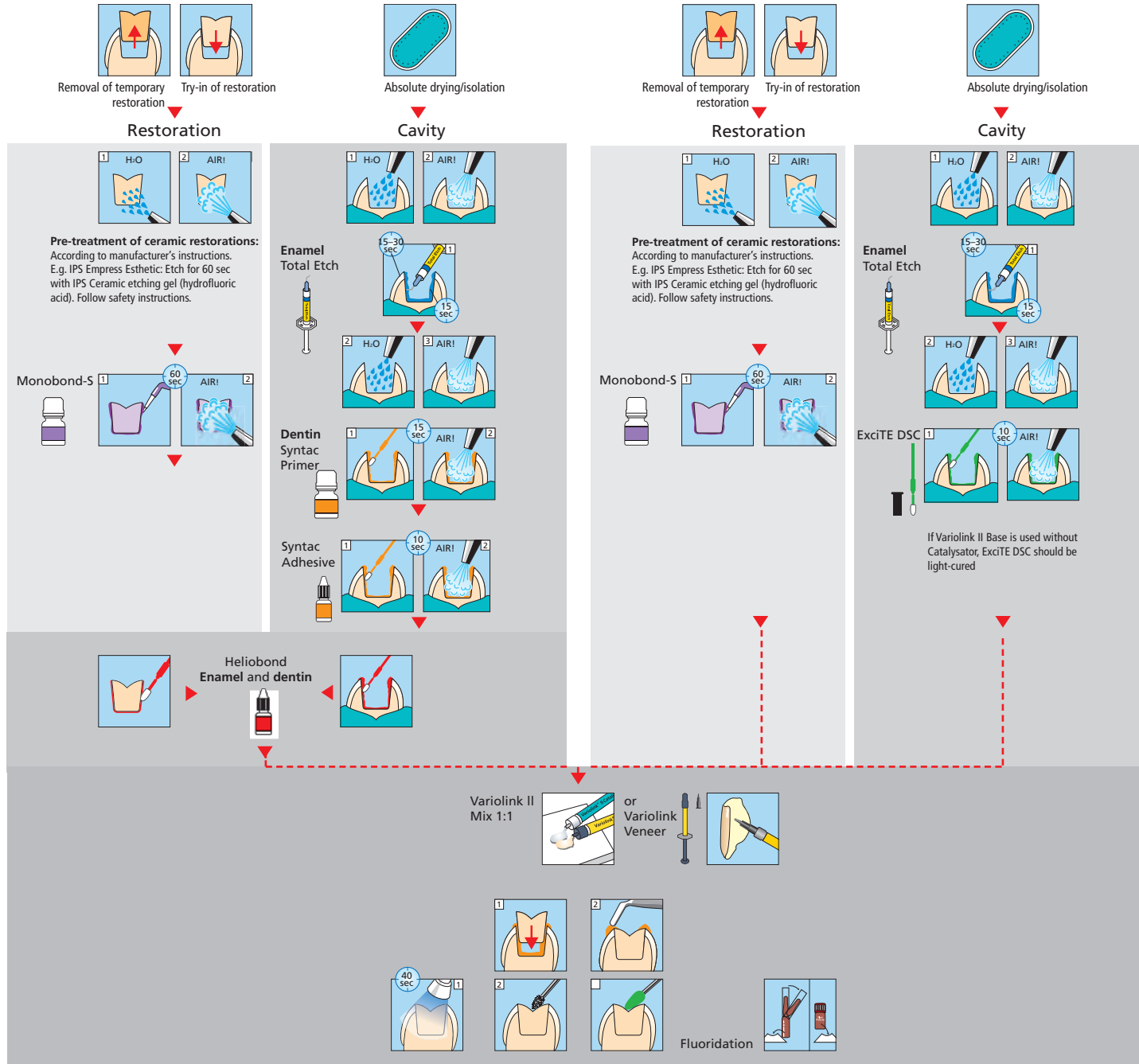


# Placement of IPS Empress® Esthetic restorations with

## Variolink® II or Variolink Veneer / Syntac®

## Variolink® II or Variolink Veneer / Excite® DSC

## Multilink® Automix





# Empress® Esthetic – Preparation Guidelines

Careful preparation is decisive for the durability and accuracy of fit of the restoration.

It is important to properly design the margin with a circular shoulder or chamfer preparation and rounded inner aspects. Transitions with sharp angles and feather edge margins should be avoided. In order to achieve a stable restoration, the minimum wall thicknesses have to be observed.

