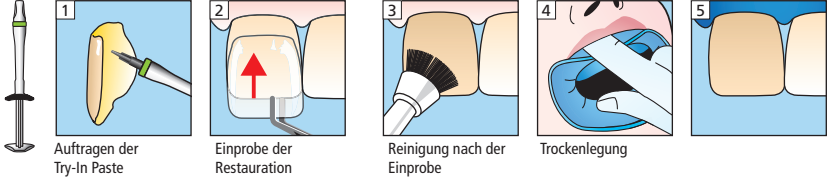


# Variolink® Esthetic LC

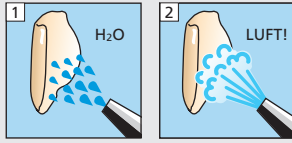
## Eingliederung von Veneers (Glaskeramik, Composite)

### Einprobe

Variolink Esthetic Try-In



### Restauration



#### Vorbehandlung von Keramik-restaurationen:

Gemäss Herstellerangaben

Z.B. IPS Empress: 60 s ätzen

IPS e.max CAD/Press: 20 s ätzen

mit IPS Ceramic Ätzel (Flusssäure).

Sicherheitshinweise beachten.

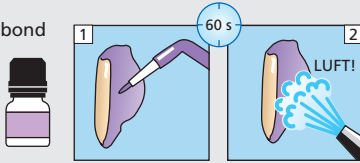
#### Vorbehandlung von Composite-Restaurationen:

Gemäss Herstellerangaben

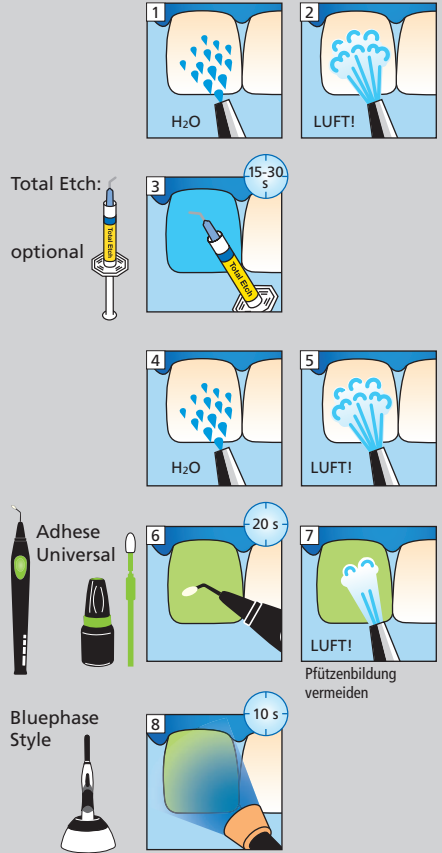
Z.B. SR Nexco, 2 bar, Al<sub>2</sub>O<sub>3</sub> 100 µm

oder mit Finierdiamanten aufrauen.

Monobond Plus

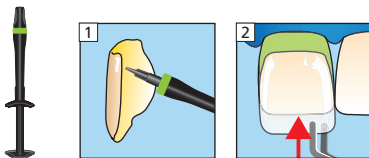


### Präparation

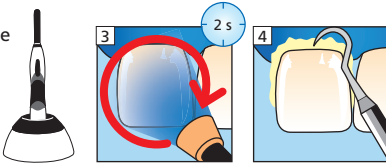


### Befestigung

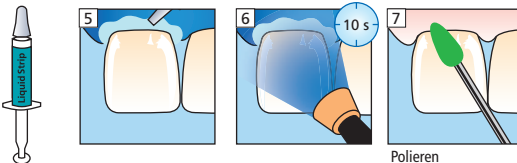
Variolink Esthetic LC



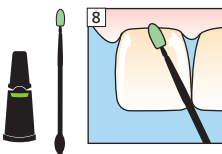
Bluephase Style



Liquid Strip



Fluor Protector



mehr Informationen unter [www.cementation-navigation.com](http://www.cementation-navigation.com)

CE 0123



Bitte Gebrauchsinformation beachten

ivoclar  
vivadenti  
clinical

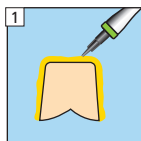
Erstellungsdatum: 2014-06-25  
666331/ld/Rev. 0

# Variolink® Esthetic LC

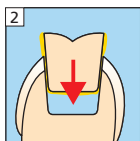
Eingliederung von Inlays (Stärke < 2 mm) (Glaskeramik, Composite)

## Einprobe

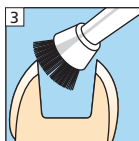
Variolink Esthetic Try-In



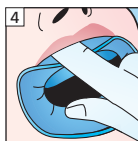
Auftragen der Try-In Paste



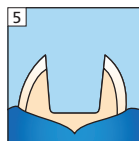
Einprobe der Restauration



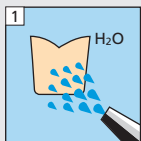
Reinigung nach der Einprobe



Trockenlegung



## Restauration



### Vorbehandlung von Keramik-restaurationen:

Gemäss Herstellerangaben

Z.B. IPS Empress: 60 s ätzen

IPS e.max CAD/Press: 20 s ätzen

mit IPS Ceramic Ätzel (Flusssäure).

Sicherheitshinweise beachten.

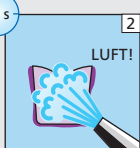
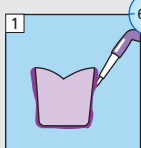
### Vorbehandlung von Composite-Restaurationen:

Gemäss Herstellerangaben

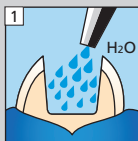
Z.B. SR Nexco, 2 bar, Al<sub>2</sub>O<sub>3</sub> 100 µm

oder mit Finierdiamanten aufrauen.

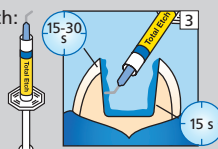
Monobond Plus



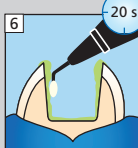
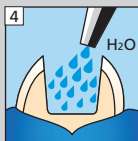
## Präparation



### Total Etch:

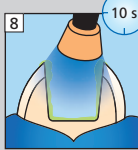


optional



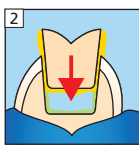
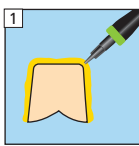
Pfützenbildung vermeiden

### Bluephase Style

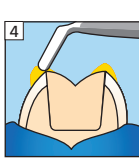


## Befestigung

Variolink Esthetic LC

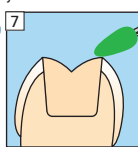
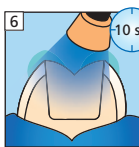
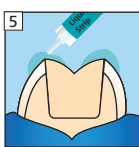


Bluephase Style



Restauration bis zum Ende der abschliessenden Polymerisation fixieren

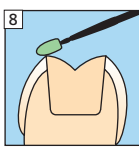
Liquid Strip



\* pro Segment und mm Keramik

Polieren

Fluor Protector



mehr Informationen unter [www.cementation-navigation.com](http://www.cementation-navigation.com)

CE 0123



Bitte Gebrauchsinformation beachten

ivoclar vivadent clinical